



WOOLADDICTS

#13

33460001 D/P/NL

BY LANGYARNS

CHF 9.90 € 9.95

EXPRESS YOUR CRAFTING PERSONA!

What character will you embody with your next project? Are you a **GREEN GODDESS**, taking care of your health and making sure you consume a balanced yarn-diet. Perhaps you're more inclined to be a **YARN ARTIST**, drawing inspiration from the rich hues and textures bestowed by Mother Nature.

Or consider embracing the essence of a **MOTHER OF PEARLS**, nurturing, and polishing your skills and projects to perfection. And for those captivated by a spectrum of colors, you can always unleash your inner **RAINBOW COLLECTOR** and take your crafting for a ride across all colors of the rainbow...

A world of knitting and crochet awaits you in these pages, inviting you with every stitch to create the vibrant tapestry of your creative expression!

WOOLADDICTS



NEW!

GLAMOUR

This yarn isn't for everyone, but if you're someone who appreciates a touch of sparkle in your life, **GLAMOUR** is the perfect match for you.

Whether you're crafting a festive hat or aiming to infuse a bit of glamour into your everyday, **GLAMOUR**'s luxurious blend of subtle glitter and texture allows you to shine.

ITEM# 101

NEW!

DESIRE

Put to rest your deepest knitting **DESIRE** with this soft ball of wool. Valuable, light, and dry, this super bulky yarn allows you to craft the coziest accessories and garments to be done. Prepare your needles and realize a sweater that wraps you in the gentle embrace of a perfect hug.

ITEM# 102



WOOLADDICTS



GREEN GODDES

MACHA - KALE - SPIRULINA



YARN ARTIST

UMBER - OCHER - SIENNA



MOTHER OF PEARLS

SATIN - VELVET - DAMASK



RAINBOW COLLECTOR

MULTICOLOR



FIND A SEED OF PASSION...

GREEN GODDESS

A woman with short blonde hair, wearing a vibrant lime green sweater and dark brown cargo pants, is captured in a dynamic, dance-like pose on a rugged, rocky terrain. She is positioned on the right side of the frame, with her arms extended and one leg lifted. The background features large, layered rock formations under a clear blue sky. The overall mood is energetic and adventurous.



GLORY. WHICH LURE LEAVES ON A BRANDED OR UNPREDICTABLE MANAGER VIBES, THE CARDS ON THE CARDIGAN BURST FORTH WITH VIBRANT LIFE. WHILE KNOTTING THE APPLIED BOBBY CARDIGAN MAY DEMAND SOME SUSTAINED APPLICATION, THE OBLIVIOUS RESULT IS UNCOURTESY WORTH THE INVESTMENT.

www.wooladdicts.com
 CASHMERE PATTERN# 283-000-001



Wooladdicts



... AND NURTURE IT TO FRUITION!

MEMORY. THE RHYTHMIC INTERPLAY OF STITCHES ON THIS TRIANGULAR SHAWL OFFERS NOT ONLY A VISUAL FEAST BUT ALSO A TACTILE EXPERIENCE. FIELD ROMANTIC'S SEWING AND FINISHING TO SYNCHRONIZE THE RHYTHM OF YOUR CRAFTING WITH THE EBB AND FLOW OF NATURE.

FIELD ROMANTIC TRIANGULAR SHAWL PATTERN 203-003-001





GLORY. IF YOUR WARDROBE AND YOUR NEEDLES CRAVE A LITTLE BOOST, LOOK NO FURTHER THAN THIS TEXTURED SCARF ADORNED WITH A FRINGE. THIS HEALTHY SHOT OF GREEN WILL BOOST YOUR SMILING MOUTH TO NEW HEIGHTS, BREATHING FRESH LIFE INTO YOUR CREATIVE ENDEAVORS.

[KALINGA PATTERNS](#) | MIAMI | PATTERN# 383-003-001





GLAMOUR. You'll get a whole lot more than in the modern world. Plus, you'll embrace an alluring promise.
of what's to come. However, you can't turn this promise into a tangible, finished object.

WOLLADDICTS www.wolladdicts.com **WOLLADDICTS** www.wolladdicts.com

KNIT your past with **GRATITUDE**
- **PURL** your future with **LOVE**



WOLLADDICTS



GLAMOUR. THIS SWEATER IS A TRUE COMEBACK, WEBS HANDED EFFORTLESSLY WITH A PAIR OF BROWN BOOTS, SET WITH A COUPLE FEET OF HAIR, AND JUST TURN INTO THE PERFECT CHRISTMAS SWEATER. AN EXPERTISE THAT WILL NEVER MAKE IT INTO YOUR WARDROBE AGAIN. YOU WON'T BE ABLE TO STOP WEARING IT.

EXCLUSIVELY AT WWW.WOOLADDICTS.COM **888.888.8888** **PH: 781.282.0000**





FIRE. IN THE HEART OF THE DESERT, A CAPTIVATING PHOTOGRAPHY UNIT, DR. JAMAYEST THE MCGROOP OF AN ARID LANDSCAPE, VIBRANT HAIR BLAST FORTH AFTER THE RAIN, CREATING A TEMPORARY OASIS OF COLOR AND VITALITY. EMBRACE THE ESSENCE OF THE DESERT BLOOM WITH THIS SWEATER, BLOSSOMING LIKE A BURST OF LIFE IN A GREY WORLD.

EXPERIENCE IT NOW

SEE MORE PATTERNS 280-500-0001



WOOLADDICTS



One **BREATH** at a time – one **STICH** at a time

GLORY. THE SPATERPAT COLLAR OF THE HIDDEN OASIS CARAVAN ENVELOPES YOU LIKE A PROTECTIVE SHELL. BECAUSE SOMETIMES YOU JUST NEED TO HIDE AWAY FROM THE WORLD FOR A LITTLE AND COZY UP WITH YOUR KNITTINGS. SO, ANALISE, TAKE A BREATH, TAKE A REST, AND REFLECT ON YOUR NEXT KNITTING PROJECT. IT'S IN THE SMALL MOMENTS THAT ONE CAN FIND A HIDDEN OASIS IN LIFE.

THE HIDDEN OASIS | **TRAVELMAMA** | **ANALISE** | **WINTER** | **88-90-92-94**



WOOLADDICTS 68



Embrace the GREEN life...



WOOLADDICTS

MEMORY. IN AN ARID LANDSCAPE, WHERE LIFE ENDURES THROUGH RESILIENCE, A SYMBOLIC REVIVAL UNFOLDS THROUGH THE FIBER ARTS. IN THE DESERT REVIVAL VEST, EACH STITCH BECOMES A METAPHORICAL REPRESENTATION OF LIFE. THE VEST SERVES AS A LIVING CANVAS, CAPTURING THE ESSENCE OF TENACITY AND ENDURANCE AMID THE HARSH LANDSCAPE.

DESERT REVIVAL WILLY PATTERN 363-008-001

DESIRE. LUSH GRASS IS A WEARABLE SANCTUARY ENVELOPING YOU IN COZY COMFORT. THE OVERSIZED SILHOUETTE OFFERS A RELAXED FIT ALONG TO THE ABUNDANCE OF NATURE FLOURISHING IN AN EARLY. IF YOU THRUST FOR A QUICK PROJECT WITH BIG NEEDLES, LOOK NO FURTHER.

LEARN MORE [WWW.PATTEONLINE.COM](#)





HONOR. THE UNUSUAL GUEST CASHMERE BLENDS POLARIS SIMPLICITY AND ANIMALS, MAKING IT AN IDEAL
PROJECT FOR A TOP FODDER AND SMALL TREASURES OF CASHMERE. THE CASHMERE COVERS POCKETS,
CASHMERE POCKETS FOR THE ONLY MAN.

VERACIOUSLY POLARIS CASHMERE PHOTOGRAPH 2019-2020-2021

... follow the **GREEN** thread
= It may lead you to unexpected places.



DESIRE. THIS SLEEVELESS, APTLY NAMED EVERGREEN TONIC, SERVES AS A WELLSpring OF ENDURING INSPIRATION. EACH ROW, WHILE DISTINCT, ALSO SLOTS SEAMLESSLY INTO THE FABRIC OF THE OTHERS THAT COME BEFORE. WITH EVERY NEW STITCH, IT CAPTURES THE ESSENCE OF THE SHIMMER AND REJUVENATION AROUND

EVERGREEN TONIC ALPHANUM PATTERN# 323-011-001





HONOR. SOMETIMES, ALL YOU NEED IS TO DISTILL YOUR OUTFIT DOWN TO A STATEMENT SWEATER AND A COZY HAT. REFRESHING BREW BLENDS VARIOUS SHADES OF GREEN, KEEPING YOUR MIND SHARP IN KNITTING AND YOUR EARS WARM IN WEARING IT. MEANWHILE, EMERALD ELIXIR ENSURES YOUR KNITTING STAYS ENGAGING, TRANSITIONING COLORS EVER SO OFTEN FOR A VIBRANT STRIPE LOOK.

REFRESHING BREW KIT PATTERN# 383-012-001
EMERALD ELIXIR SWEATER PATTERN# 389-019-001





MEMORY. THE COLOR GREEN STANDS FOR HEALTH AND WELL-BEING. IT IS A CALMING COLOR THAT CAN PROMOTE RELAXATION AND STRESS RELIEF. GREEN HORIZON OFFERS YOU A CARNY OF ENDLESS POSSIBILITIES AND THE EXPANSIVE POTENTIAL THAT LIES AHEAD. WHILE GREENOVATION KEEPS YOU CONCENTRATED BUT RELAXED WITH AN UNUSUAL STITCH PATTERN.

GREEN HORIZON
GREENOVATION

HAT PATTERN# 283-016-001
SCARF PATTERN# 283-016-001



WOOLADDICTS



YARN ARTIST

HONOR. PACHAMAMA, A CHERISHED GODDESS IN ANDSIAN AND INCA MYTHOLOGY, EMBODIES THE SPIRIT OF MOTHER EARTH. WRAP YOURSELF IN THE WARMTH AND EMBRACE OF THIS WOVEN SWEATER, CONNECTING WITH YOUR NURTURING ESSENCE.

PACHAMAMA SWEATER PATTERN# 282-016-001



Knit nature's PALETTE ...





... Into your LIFE'S FABRIC

WOOLADDICTS

GLAMOUR. MUCH LIKE THE LAYERS OF SEDIMENTS, THE VARIED TEXTURES AND COLORS OF GLAMOUR INFUSE THIS KEEPT WITH DEPTH AND A SENSE OF HISTORY. AS YOU KNEEL, CONSIDER THE MEMORIES YOU WEAVE INTO EACH STITCH - WHAT PERSONAL STORY IS TAKING SHAPE IN YOUR GARMENTS?

WOLLENSKOPF | 818.968.7777 | FITZGERALD 280-07-001





... unleash your inner **ARTIST!**



GLAMOUR. FIFTY SHADES OF RED AND BROWN INTERWEAVE IN THIS EXQUISITE SCARF, ALLOWING THEM TO BLEND AND PLAY TOGETHER, ACQUIN TO PIGMENTS ON AN ARTIST'S PALETTE. WITNESS THE HARMONIOUS FUSION OF COLORS, EACH ONE CONTRIBUTING TO A MASTERPIECE TO DRAPED AROUND YOUR NECK.

TEXTURE SLAMP PATTERNS 289-018-001



GLAMOUR. HUMBLE AND DOWN-TO-EARTH, THIS SWEATER ALLOWS THE WEAVER TO TAKE CENTER STAGE. IT SHOWCASES BEAUTIFUL SHADES REMINISCENT OF THE FERTILE CLAY AND EARTHY TONES OF CLAY.

SHADES OF CLAY KARDIAN PATTERN 260-019-001





WOOLADDICTS



Touch of **SPARKEL**

GLAMOUR. CONIGES ARE SHAVED BY THEIR HAIR, FEEL, TONE, AND SUEDE, MUCH LIKE THE VARIANTS OF BRONNENHAE GRONNEN IN THIS COOZY HAT. WHILE KNITTING, TAKE TIME TO REFLECT ON THE FIBES THAT DEFINE YOU - WHAT UNUSUAL SHADE BECOMES YOUR COLOR? **HAIR: COOL-TOO** HAT: PATTERNS 283-022-001

HONOR. WITH ITS INTRICATE ALL-OVER CABLES AND RELAXED FIT, COMPLETING THIS SWEATER MAY REQUIRE SOME DEDICATED ATTENTION AND CARE. HOWEVER, WITH THE APPROPRIATE ENCOURAGEMENT AND NURTURING, IT IS BOUND TO TRANSFORM INTO A EXERCISED FAVORITE FOR EVERY OCCASION.

MOTHER WOLVES WWW.MOTHERWOLVES.COM PATTERN# 283-021-001





DESIRE. JARVIS' SWEATERS ARE THE EMBODIMENT OF COMFORT AND WARMTH IN THE FORM OF A FLUFFY, COZY KNITWEAR. CRAFTED WITH THE SOFTEST WOOLLEN CASHMERE, YOU'LL NEVER EMBRACE WINDCHILL AGAIN. PROVIDING A SENSE OF SECURITY AND TRANQUILITY, THE LOOSE FIT AND EARTHY COLOR MAKE IT NOT JUST A PIECE OF CLOTHING BUT A SANCTUARY.

CAVU'S INSTANTLY BREEZY | **FAST** | **2024-2025** | **2024-2025** | **2024-2025**





MEMORY. THE ESSENTIAL TEXTURES STEEPS INSPIRING THE RICHNESS OF SOIL, NURTURED BY VOLCANIC MINERALS
LEND A WARMER TOUCH TO THE LAYER GARDEN DESIGNER. THE DEEP RED-IRON CHOSEN NOT ONLY FEEDS THE FERTILIZERS
BEHIND THE SCENES, BUT ALSO BRINGS WITH THE VIBRANT COLORS OF NATURE'S MOST FERTILE LANDSCAPES.

EXVIA CASTELL | **GARDEN** | INT 9186 281-223-000

Mix **STITCHES** - like a painter combining **PIGMENTS**



YARN is my SANCTUARY



HONOR. THIS TEXTURED VEST IS A MEDITATIVE KNITTING JOURNEY. INTRICATELY DESIGNED WITH A BLEND OF KNOT AND PURL STITCHES, IT CREATES A TAPESTRY OF TACTILE FINISHES THAT MIRRORS THE LAYERS OF CALM FOUND IN A SERENE SANCTUARY. EMBARK ON THIS PROJECT TO DISCOVER YOUR OWN PERSONAL KNITTING SANCTUARY.

DEEP SANCTUARY SKAT PATTERN# 260-034-001



GLORY, A DOUBLE-BREADED JACKET KNIT IN RUBYWY GARTER STITCH, PLAINWAVE HAIR DEVELOPES YOU WITH MARMITAND STYLE. THE RUBYWY JACQUARD OF THE GARTER STITCH, REMANENT OF DANUBIO FLAMES, NOT ONLY BREATHES TO BUT ALSO UNTERS THE FIBRE OF YOUR CLOTHING, TRANSFORMING EACH STITCH INTO A VIBRANT EXPRESSION AS YOU BREATHE LIFE INTO THE EMBERS OF YOUR CLOTHING.

PLA121213133 GARDIAN PATTERNS 281-028-028





Leave a trail of WARMTH!

WOOLADDICTS

FIRE. THROUGH A SKILLFUL ARRANGEMENT OF KNIT AND PURL STITCHES, A CAPTIVATING TRAIL UNFOLDS ALONG THE ENTIRE LENGTH OF THE SCARF. ELEVATED BY THE USE OF OUR MOST SUBSTANTIAL WASH, FIRE, THE PROMISE TRAIL SCARF KEEPS YOU NICE AND WARM, WHILE ALSO LOOKING REALLY FAIRLY FABULOUSLY HOT IN ANY WINTER OUTFIT.

PROMISE TRAIL SCARF INTENSE 263-026-001





MEMORY. FIRE. FOR ULTIMATE WARMTH AND STYLE THIS WINTER, YOU HAVE TWO FIERY OPTIONS TO KEEP YOUR HEAD (AND HEART) WARM. LAVA FUSION OFFERS A CHIC BEANIE STYLE WITH A DISTINCTIVE TWO-COLOR DESIGN AND A WIDE BRIM, WHILE FIREBOLT CLAY PROVIDES THE CLASSIC HAND-KNIT AESTHETIC, FEATURING OVERSIZED YARN AND A PLAYFUL POM-POM FOR A TOUCH OF COMFORT AND FLAIR.

LAVA FUSION MEMORY **SWR** INTTERHP 269-527-001
FIREBOLT CLAY FIRE **SWR** INTTERHP 269-528-001



MOTHER OF PEARLS

WOOLADDICTS





WOOLADDICTS



MEMORY. MUCH LIKE TENDING TO A DELICATE ROSE DEMANDS SKILL AND CARE, THIS PATTERN BECKONS KNITTERS TO EMBARK ON A REWARDING JOURNEY DELVE INTO THE CHALLENGE OF CRAFTING INTRICATE CABLES AND AN ENCHANTING ALL-OVER TEXTURE, WHERE THE PROCESS BECOMES AS ORBITING AS THE FINISHED MASTERPIECE.

DAMASK ROSE CASHMERE PATTERN# 260-029-001



MEMORY. INSPIRE IN THE RICH TONES OF THE COMPLEX BLEND WE CREATE, WHERE THE DEEP PURPLE HAZE OF THE IRISH MEETS THE SOFTENED TONES OF A WELLSH WOE. JUST LIKE THE VIBRANT FLAVORS THAT DEVELOP OVER TIME IN A FINE WINE, OUR DESIGNER'S COMPLEXITY IS PART OF ITS ESSENCE, CREATING A GARMENT THAT MATURES WITH EACH STITCH.

COMPLETE PLAYOUT WWW.METROPSHIRT.COM



GLORY. INDULGE IN THE UNMATCHED ELEGANCE OF A COORDINATED HAT AND SCARF DUO WITH VELVETEEN AND CRUSHED VELVET. THE STITCH PATTERN AND VOLUMINOUS YARN COME TOGETHER, CREATING A VELVETY TEXTURE THAT IS BOTH SUMPTUOUS AND REFRAID, TRANSFORMING THESE ACCESSORIES INTO A TACTILE DELIGHT, REMINISCENT OF THE LUXURIOUS TOUCH OF VELVET.

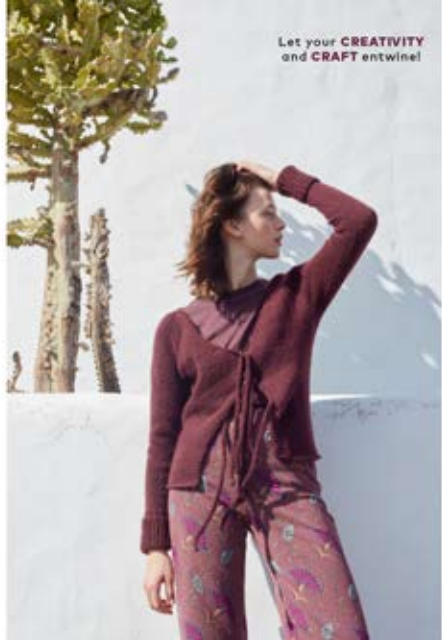
VELVETEEN HAT PATTERN# 283-032-001
CRUSHED VELVET SCARF PATTERN# 283-032-001





MEMORY, TOPDOWN LET YOUR LIPS FOR KNITTING AND HAIR EXTENSIVE WITH YOUR LIFE. THIS CARDIGAN IS KNIT FROM THE TOP DOWN, INCLUDING THE NEED TO UNDOABLE SMOO ANDER ASSEMBLING THE PIECES. AS YOU KNEE, YOU CAN REPOSIT/SLUTTER ON THE CARDIGAN, ENJOYING THE U-CORD CLOSURE FALLS PRECISELY INTO PLACE.

ENTWINEO KARDIGAN PATTERNS 360-653-099



Let your **CREATIVITY**
and **CRAFT** entwine!



WOOLADDICTS

HONOR. THIS DRESS FEELS LIKE THE WHISPER OF A SOFT EMBRACE ON YOUR SKIN. ONCE YOU PUT IT ON, YOU'LL WANT TO LIVE IN IT FOREVER. WHETHER PAIRED WITH SNEAKERS AND A CAP FOR A CASUAL ALLURE OR ELEVATED WITH HEELS AND JEWELRY FOR AN ELEGANT TOUCH, THIS DRESS SEAMLESSLY TRANSITIONS FROM COMFORT TO CHIC (OR BOTH) AT ONCE.

SOFT EMBRACE 8888 PATTERN# 289-034-001



WHEN IN DOUBT...KNIT ANOTHER ROW!



GLORY. A SUN-KISSED FACE AND A SWEATER THE DEEP COLOR OF SWEET, RIPE GRAPES - WHAT MORE COULD ONE DESIRE EVEN IN THE DEPTHS OF WINTER, THIS PIECE WILL EVOKE MEMORIES OF SUNNY, PLENTIFUL, FALL DAYS, WRAPPING YOU IN THE WARMTH OF THOSE RAILWAY TRENDS.

GRAPE-KISSED @SWAFA® PATTERN# 363-025-001





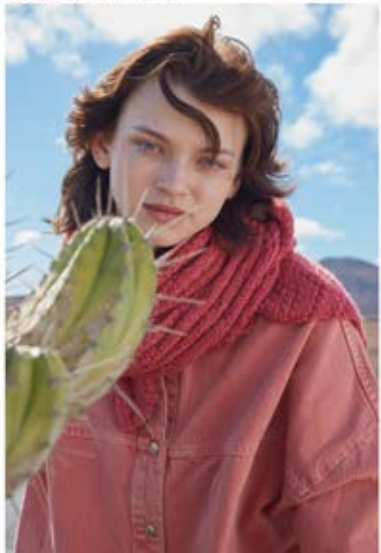
MEMORY. THIS ULTRA-CROPPED SWEATER EMPOWERS YOU WITH THE FREEDOM TO MOVE AND EMBRACE LIFE ON YOUR OWN TERMS. LIKE WILD ROSES, IT REFUSES TO BE TRAMED, LETTING YOU EXPRESS YOUR UNTRAINED SPIRIT WITH STYLE.

WILD ROSE SWEATER PATTERN 283-030-001



MEMORY. SIMILAR TO THE POTENTIAL HELD WITHIN A FLOWER BUD OR A BALL OF YARN, THE ROSEBUD SCARF INVITES YOU TO NURTURE ITS GROWTH ONE STITCH AT A TIME. LEISURE CULTIVATE ITS BEAUTY TOGETHER, UNFOLDING ITS STORY STITCH BY STITCH.

ROSEBUD SCARF PATTERN #263-007-001





GLAMOUR. THE STITCHES ON THE PEARL-KISSED HEADBAND AND THE SHIMMERING PEARL COLLAR LINE UP BEAUTIFULLY, LIKE PEARLS ON A STRING. JUST LIKE A PEARL, THAT TAKES TIME TO FORM, TRUE GLAMOUR IS CULTIVATED STITCH BY STITCH.

PEARL-KISSED HEADBAND PATTERN# 283-036-001

SHIMMERING PEARL COLLAR PATTERN# 283-037-001





Be as unique as a **PEARL!**



GLAMOUR. GLAMOURIZE YOUR WARDROBE - YOU'LL RADIATE LIKE A BEAUTIFUL AND UNIQUE PEARL IN THIS OPEN SIDED SUIPOVER WITH TIE. YOU'LL HAVE TO DO THE KNOTTING YOURSELF, BUT THE COORDINATING COLORS AND UNIQUE TEXTURE OF FLUFFY WOVEN AND PEARLESCENT SUMMER COME CURTSEY OF THE SUEDE.

PEARLESCENT SUIPOVER PATTERN# 280-040-001





DESIRE. WITH ITS VELVETY TEXTURE AND DESIGN, THE VELVET TOUCH SWEATER PROMISES BOTH COMFORT AND A STANDING LOOK FOR ANY OCCASION. THIS FLUFFY MORNING MASTERPIECE NOT ONLY ENVELOPS YOU IN WARMTH BUT ALSO FEATURES A STATEMENT POCKET, ADDING A TOUCH OF FLAIR.

VELVET TOUCH SWEATER PATTERN# 385-011-001



PEARLESCENT DREAMS,
A YARN-SPUN SEA,
A MOTHER'S LOVE,
A TAPESTRY,
FINGERS KNIT,
A GENTLE TWIRL,
MOTHER OF PEARL,
IN YARN IT SWIRLS.

WOOLADDICTS

RAINBOW COLLECTOR



0002

0003

0004

0005

0006

0007

0008

0009

0010

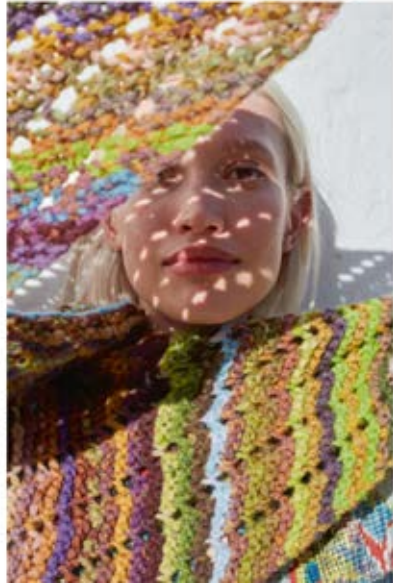


MYSTERY. THE NORTHERN-LIGHT PONCHO-BLANKETS BOKE IS A DISTINCTIVE CONSTRUCTION AND VIBRANT STRIPES THAT EVOKES THE ENCHANTING HUES OF THE AOROKA. ITS EFFORTLESS STYLE MAKES IT THE IDEAL PIECE TO THROW ON WHEN STEPPING OUTSIDE TO WITNESS ANY CELESTIAL SPECTACLE THE NIGHT SKY HAS TO OFFER.

NORTHERN LIGHTS | POKEROBLANKETS.COM | PINTEREST.COM | 303-544-0011

WOOLADDICTS

WOOLADDICTS



MYSTERY. COOGLER UP UNDER THE DRESS SKIT - THE INFINITE SKIT TRIANGULAR SHAWEL ENVELOPS YOU IN ITS GENEROUS BEEL, OFFERING A LUXURIOUS AND COMFORTABLE GRAB, WHILE THE FINE STRIPES AND SELF-INTERLOCKING OF THE YARN CREATE A CAPTIVATING VISUAL 'OPACITY,' RESEMBLING THE 3D-EXTRUSIVE BEAUTY OF THE SKIT.

INFINITE SKIT TRIANGULAR SHAWEL - INTERIUM 360-343-040



MYSTERY. ENSURE YOUR HEAD STAYS COMFORTABLY WARM, AS THOUGH BASKING IN THE GLOW OF A BEAUTIFUL SUNSHINE, WITH THE RADIANT SUN BALACLAVA. EXTEND THE WARMTH TO YOUR HANDS BY MATCHING IT WITH THE PRISMATIC SHAKERS MITTENS.

RADIANT SUN BALACLAVA PATTERN# 263-046-001
PRISMATIC SHAKERS GLOVES PATTERN# 263-045-001

Don't forget you **RAINBOW** tinted glasses!



WOOLADDICTS



explore the **MYSTERY**...



MYSTERY. INSPIRED WITH THE ALLURE OF SOLAR MYTHOLOGY, THE SOLAR DANCE SWEATER ENCAPSULATES THE SPIRIT OF A CELESTIAL DANCE, ENVELOPING YOU IN AN AURA AS RADIANT AND CAPTIVATING AS THE SUN'S GRACEFUL MOVEMENTS. WITH EACH STITCH YOU CAPTURE THE LIGHT OF THE SUN, ENSURING THAT THIS LONG SWEATER BECOMES A LUXURIOUS ADDITION TO YOUR WARDROBE.

STYLEWISER SWEATER PATTERN 263-043-001





...over the RAINBOW!



MYSTERY. THIS CARDIGAN HARMONIOUSLY BLENDS A VIBRANT SPECTRUM OF COLORS, CREATING A VISUAL SYMPHONY WITH ITS KALEIDOSCOPIC HUES. SPECTRAL SYMPHONY IS NOT JUST A GARMENT BUT A CELEBRATION OF DIVERSITY, MAKING IT A FITTING CHOICE FOR INDIVIDUALS ACROSS A WIDE SPECTRUM OF STYLES AND PERSONALITIES.

[ELEGANT ESSENTIALS](#)

CARDIGAN PATTERN# 260-047-001

WOOLADDICTS

MYSTERY. WHETHER DRAPED AROUND YOUR NECK OR TIED INTO A CHIC HAIR SCARF, CHROMA FUSION ADDS A PLAYFUL AND COLORFUL DIMENSION TO YOUR FASHION REPERTOIRE, EFFORTLESSLY ENHANCING YOUR OVERALL LOOK.

[CHROMA FUSION](#) EMAIL: [PATTERN@200-048-001](#)





MYSTERY. THE COLORS YOU CHOOSE TO ADORN YOURSELF WITH HAVE A DEEP AND MIND-BLOWING MEANING ON YOUR THOUGHTS AND EMOTIONS. BEST ASSURED, WITH THIS VIBRANT TECHNICOLOR SWEATER, YOUR LIFE AND YOUR KNITTING ARE DESTINED TO BE ANYTHING BUT BLAND.

www.wooladdicts.com 800.368.3688

LIFE is more FUN in TECHNICOLOR!



WOOLADDICTS

WOOLADDICTS



MYSTERY. THESE SOCKS NOT ONLY KEEP YOUR FEET COZY BUT ALSO ADD A KALEIDOSCOPIC TOUCH TO YOUR ENSEMBLE, MAKING EVERY STEP A COLORFUL JOURNEY. COMPLETE THE OUTFIT WITH THE MATCHING MITTENS, PRISMATIC SHAKERS, FOR A COORDINATED BURST OF CHROMATIC WARMTH THAT MOVES WITH YOU THROUGH ALL THE SHADES OF STYLE.

[PRISMATIC SOCKS](#) SOCKS PATTERN# 283-050-001





MYSTERY. WHETHER WORN AS A HAT, COWL, OR HOOD, THIS KNITTED CREATION SEAMLESSLY ADAPTS TO THE CIRCUMSTANCES. LIKE THE OVER-SHEFFING PATTERNS IN A MALEIOSCOPE, IT TRANSFORMS WITH THE FLICK OF THE HAND.

MALEIOSCOPE | LAMP | PATTERN# 263-053-001





LANG

Quality since 1859



4 843162 227444