

FAM

FATTO A MANO
212

COLOR

LANG

Woolen

2016.0001

www.langyarns.com

LANG
FASHION





LANG
KÄRNTEN



3 touring color



LANG
KNOIT



5 mille colori

LANG
FASHION



6 mille colori





LANG
KÄSE



















LANG
FASHION









LANG
FASHION













www.langyarns.com





SILKMERINO

12% Shetland (Merino) Wool, 22% Mohair, 4% Polyester, ca. 130m/3kg, NR 45 - 5
12% new wool (merino wool), 22% silk, 4% polyester, ca. 130m/3kg, NR 47 - 2 207 - 8



SOPHIA

42% Alpaca (peruwool), 12% Shetland, ca. 100m/3kg, NR 9 - 10
42% Alpaca (peru wool), 12% new wool, ca. 100m/3kg, NR 9 - 10 205 12 - 10



MALOU LIGHT

72% Baby Alpaca 100% Polyester, 12% Mohair, ca. 170m/3kg, NR 45 - 6
72% baby alpaca 100% nylon, 12% wool, ca. 170m/3kg, NR 45 - 6 207 - 8



DOUDOU

100% Polyester, ca. 110m/3kg, NR 15 - 4
100% nylon, ca. 110m/3kg, NR 15 - 4 207 - 8



CASHMERE LACE

100% Cashmere, ca. 140m/3kg, NR 1 - 25
100% mohair, ca. 140m/3kg, NR 2 - 25 207 - 8



ALBERTA

42% Mohair (Merino wool), 22% Nylon, 22% Polyester, 12% Cashmere, ca. 150m/3kg, NR 45 - 1
40% new wool (cashmere), 20% mohair, 20% nylon, 12% mohair, ca. 150m/3kg, NR 45 - 1 207 - 8



MINERVA

42% Shetland (Merino) Wool (superwash), 12% Polyester, ca. 100m/3kg, NR 15 - 4
42% new wool (merino wool) superwash, 12% nylon, ca. 100m/3kg, NR 15 - 4 207 - 10



ELENA

50% Shetland, 50% Polyester, ca. 100m/3kg, NR 9 - 10
50% new wool, 50% polyester, ca. 100m/3kg, NR 9 - 10 207 - 10



ASTORIA

42% Polyester, 22% Shetland, ca. 70m/3kg, NR 3
42% nylon, 22% new wool, ca. 70m/3kg, NR 3 207 - 8



SPRAY

100% Shetland (Merino) Wool, ca. 100m/3kg, NR 9 - 9
100% new wool (peru wool), ca. 100m/3kg, NR 9 - 9 207 - 12



BROOKLYN

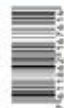
42% Mohair, 42% Polyester, 4% Polyester, ca. 42m/3kg, NR 10 - 12
42% wool, 42% polyester, 4% nylon, ca. 42m/3kg, NR 10 - 12 207 - 10 - 12



MANHATTAN

12% Shetland, 47% Polyester, ca. 100m/3kg, NR 10 - 12
12% new wool, 47% polyester, ca. 100m/3kg, NR 10 - 12 207 - 10 - 12

LANG
YARN S



9433862 3676 14